

Applications

AxioVision SFM

Cell Image Associated Data for Flow Cytometry Results

AxioVision SFM proved to be a reliable alternative method, providing results comparable to LSC (Laser Scan Cytometer) and FCM (Flow Cytometer). Slide based cytometry (SBC) proved to be more suitable for rare-cell detection than FCM. SFM with digital slides may prove an acceptable adaptation of conventional fluorescent microscopes in order to perform rare cell detection.

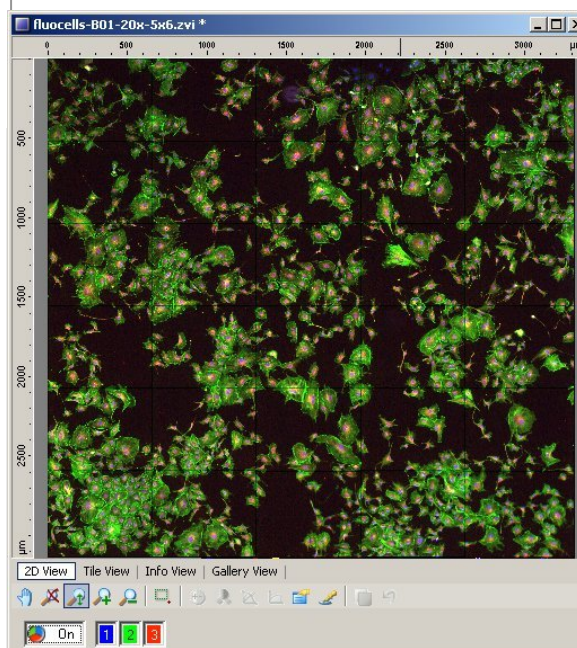
Based on the results of flow cytometry statistically sufficient cells from cytospin specimens will be acquired automatically in multiple fluorescence channels (MosaiX module) with a digital camera (AxioCam MRm) using an upright fluorescence microscope (Axio Imager). Using appropriate scripts these images will then be measured

with AxioVision software.

The scripts may be adapted to all evaluation needs. AxioVision offers all currently available functions and parameters for image processing and image analysis. All single steps may be combined in any order to receive reasonable extraction parameters for the single cell analysis. The measurement results of all cells are finally integrated in a single data table.

The SFM module is finally used to link the data of the results table with the original multichannel image. From these data various distribution types may be created (histogram, scatter plot, gallery, gated data table), in order to isolate "rare event" cells as an image with the connected data.

AxioVision SFM system with Axio Imager, Piezo motor stage and AxioCam MRm



- Acquisition of multichannel MosaiX images
- Measurements of geometric and densitometric cell data
- Coordinate measurements of single cells
- Histograms with gates
- Scatter plots with gates
- Special "rare events" gallery

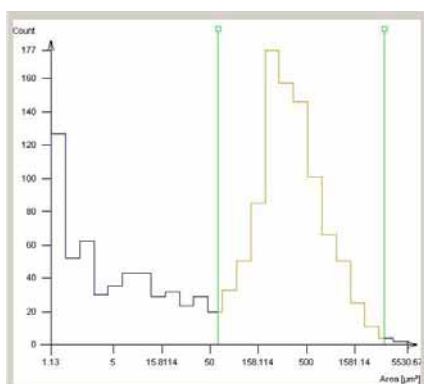


We make it visible.

AxioVision SFM - Methods and Equipment

AxioVision SFM Methods

The results table for the SFM evaluation holds all desired raw data and derived parameters for the further evaluation. Additionally the cell coordinates for the various channels and the window coordinates for each single cell may be found here. From this table various distributions may be generated in any sequence and for each available parameter.

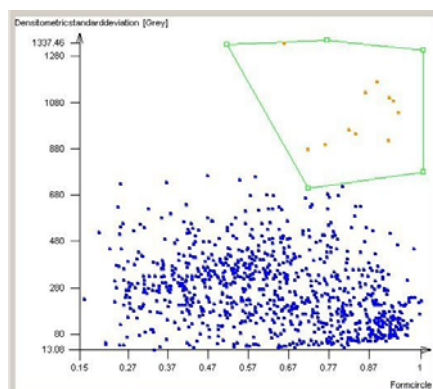


SFM histogram.

As shown in the histogram the nucleus area may be used as an example to perform a size distribution and create a histogram. Using two gates a specific region may be marked in the histogram. Further distributions may be generated for all cells lying inside these two gates.

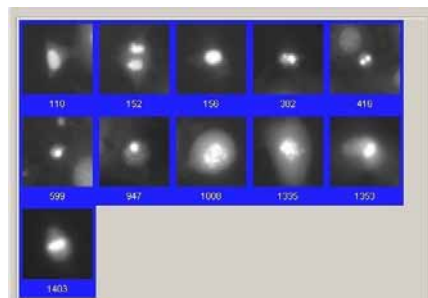
Using the scatter plot two parameters may be plotted against each other, as shown in the scatter plot. Again all values from all image channels may be used. In our example we plotted the cell form against the grey value standard deviation of each nucleus (DAPI channel). Using geometric windows (circle, ellipse, freehand) several regions of interest may be created to filter out

the final cells of interest. In our example these cells with high grey value standard deviations represent dividing cells with visible chromosomes.



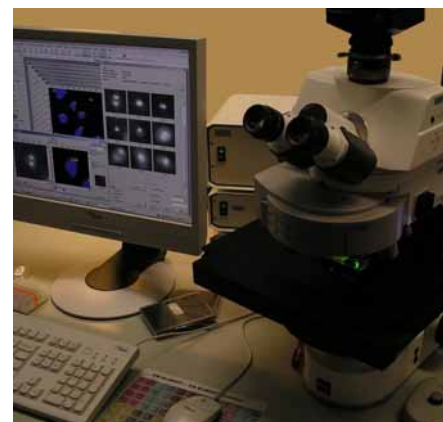
SFM scatterplot.

These "rare events" surviving the gating processes may now be visualized in a gallery as cell images with adaptable window sizes and zoom factors (SFM gallery). The gallery also allows for further selection of specific cell images by a simple click to the image frames.



SFM gallery.

A gated data table may be created from these final "rare events". Using the object coordinates cells of interest may be relocated under the calibrated microscope for control.



SFM system.

AxioVision SFM Equipment

A) Acquisition and evaluation station

- Microscope Axio Imager mot
 - FL-illumination
 - FL-filtersets
 - Motor stage with control
- AxioCam MRm camera
- Computer
 - 19" TFT monitor
- Software
 - MTB2004 microscope control
 - AxioVision Basis
 - Multichannel Fluorescence module
 - Mosaic module
 - Autofocus module
 - Imaging Plus module
 - Interactive Measurement module
 - Auto Measure Plus module
 - Commander module
 - SFM module

B) Additional evaluation station

- Computer
 - 19" TFT monitor
- Software
 - AxioVision Basis
 - Imaging plus module
 - Interactive Measurement module
 - Auto Measure plus module
 - Commander module
 - SFM module

Carl Zeiss MicroImaging GmbH

P.O.B. 4041, 37030 Göttingen, Germany
 Phone: +49 551 5060 660
 Fax: +49 551 5060 464
 E-mail: micro@zeiss.de
www.zeiss.de/axiovision